

# Luxury Hospitality Brand Four Seasons Opens Private Residences In San Francisco

Julia Brenner



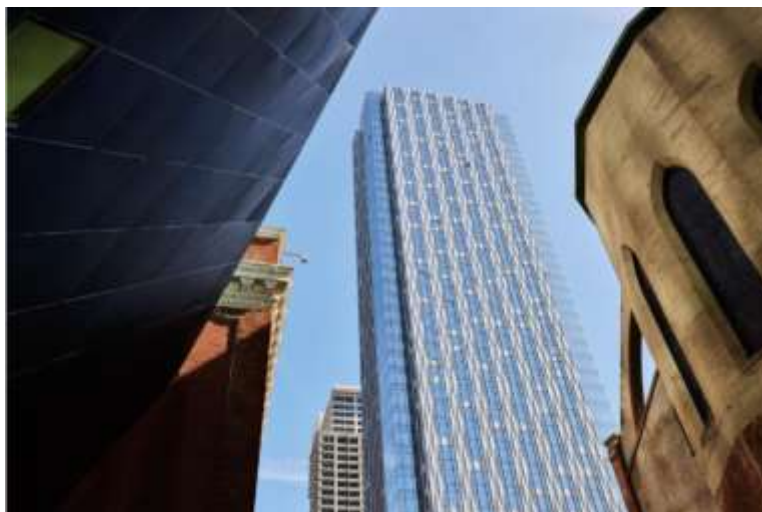
Interior of the new Four Seasons Private Residences in San Francisco. HARDY WILSON

Twelve years in the making, the highly anticipated Four Seasons Private Residences at 706 Mission, San Francisco is now open and welcoming its first residents. Located in the city's Yerba Buena District, the ambitious project includes the historic Aronson Building reimaged as luxury residences and a newly constructed tower featuring estate-style homes.



The newly opened Four Seasons Private Residences features the historic Aronson Building and a newly constructed tower.

Designed by Handel Architects, the project includes the restoration, rehabilitation, and repurposing of the historic 10-story Aronson Building, which dates back to 1903 and survived the city's Great Earthquake of 1906. Adaptive reuse of the Aronson Building was overseen by preservation architect Page & Turnbull, who partnered closely with Handel Architects. Conceptually, the team sought to blend historic authenticity and modern innovation in the form of two contrasting but complimentary buildings – the reimaged Aronson Building and an adjacent, new 510-foot tower.



The massing of the newly constructed tower was carved to form a series of alternating glass and masonry volumes, creating vertical strips of material that are meant to relate to the linear landscaping of the neighboring Jessie Square Plaza. [-] HARDY WILSON

“This project beautifully showcases the complex interplay between two contrasting buildings – the historic Aronson Building finished in a darker color palette adjoined by the new tower, which showcases lighter tones,” said Glenn Rescalvo, partner at Handel Architects. “Our goal was to create a legacy building that wasn’t just all glass – instead, we utilized undulating stone on the façade to create a sense of movement and make the project stand out on the San Francisco skyline.”



Newly designed interiors are inspired by the grand homes of classic Park Avenue buildings. Prioritizing space and privacy, there are at most four units per floor in the tower (128 residences total) and three per floor in the Aronson Building (18 residences total). [-] [HARDY WILSON](#)

The project’s 146 residences offer modern amenities, spacious floor plans spanning up to 5,000 square feet, and classic pre-war style design elements. Standout features include grand corner living rooms with floor-to-ceiling glass windows, dedicated lounge areas, large central kitchens, and master bedrooms with sweeping views.

Personalized kitchens have been configured so that they can be open to the living areas or enclosed, based on the buyer's preference. Top-of-the-line appliances, cabinetry and stone countertops are included throughout each home.

Renowned cabinetry designer Christopher Peacock created an exclusive cabinetry collection, *The Penthouse Collection*, for the penthouse homes, which includes kitchen, master bath, and dressing room cabinetry. Peacock’s designs for The Penthouse Collection mark his first collaboration with a luxury high-rise in San Francisco.



Personalized kitchens have been configured so that they can be open to the living areas or enclosed, based on the buyer's preference. [-] HARDY WILSON



Residences of the Tower feature floor-to-ceiling windows with breath-taking views of the city skyline. [-] HARDY WILSON

**Four Seasons Private Residences** stands out as a noteworthy example of a luxury residential project that applies adaptive reuse and historic preservation as part of the overall concept, illustrating that old and new can work together to create distinctive elegance in the context of modern living.

- *This project is the latest in an exclusive collection of Four Seasons standalone Private Residences. Four Seasons debuted its standalone Private Residences at Twenty Grosvenor Square in London, followed by projects in Los Angeles, Marrakech, and now San Francisco.*
- *Four Seasons Private Residences at 706 Mission, San Francisco is developed and built by 706 Mission Street Co. LLC, an affiliate of Westbrook Partners.*